



Shropshire  
Gateway  
Educational Trust

# Lacon Childe School

*...more than just a school*

Head of School Mrs. Rachel Croxton-Broome  
Consultant Executive Headteacher Mrs. Ruth Allen



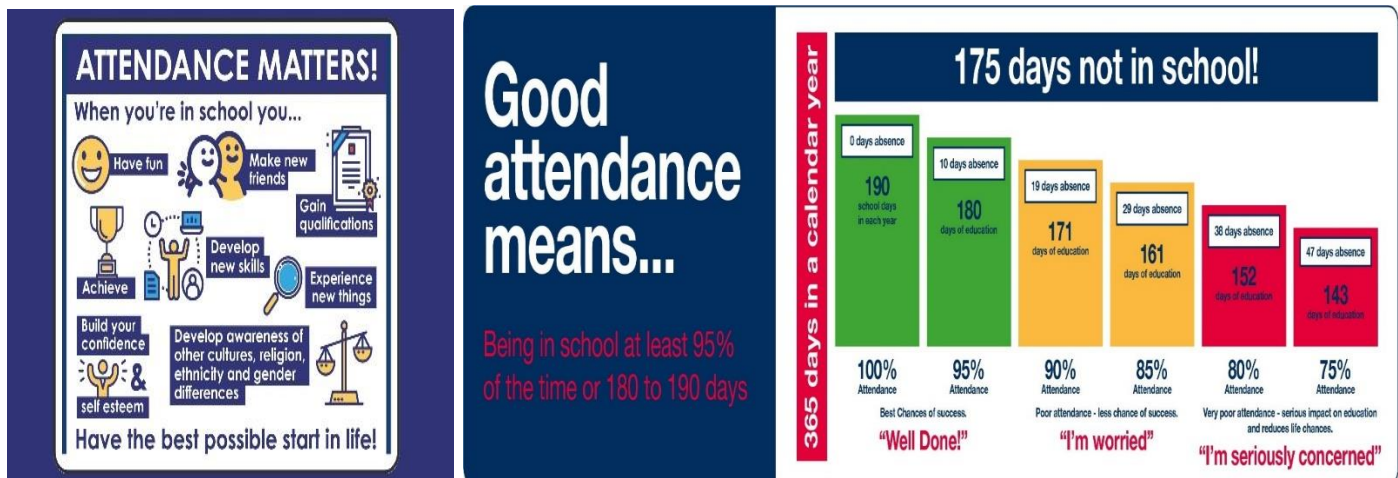
25 September 2024

Dear Parents/Carers

## Attendance Matters – Minutes Matter

If your child is unable to attend school please report this absence before 8.45am on the first day, and each subsequent day of absence to [attendance@laconchilideschool.co.uk](mailto:attendance@laconchilideschool.co.uk) or leave a phone message on 01299 270312. We will not be using Arbor to report absence at this current time.

Our attendance officer will contact you if you do not notify us, to enable accurate records of attendance to be kept. As you already know, we will conduct 'safe and well' checks if students are not in school, in the form of a home visit from a member of our school staff.



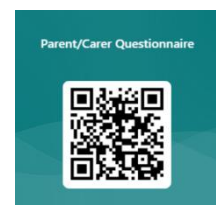
## Student access to Arbor

The student portal for Arbor is now open and available for your child to log in to. All students have been shown how to do this over the past week and have received an email to their school email account explaining this process in case they have forgotten. The following link (included in their email) will take students directly to the correct site, this should be stored in their bookmarks for future use. <https://the-lacon-childe-school.uk.arbor.sc/>

Once students have successfully logged in and set their own password they will be able to see their attendance, timetable, and assignments (homework) information. They will no longer need to ask you about what homework they have. The link below (also included in their email) provides further advice on using the student portal. <https://support.arbor-education.com/hc/en-us/articles/360006651877-The-Student-Portal-Quick-tips-for-students>

## Stakeholder Voice

We are continuously looking for ways to improve and your opinions as parents/carers are extremely important to us. Please could we ask you to complete the parent/carer questionnaire using the QR code below. This link will be active for the next 3 weeks.



## **SEND Reviews**

Thank you to our Year 7 and Year 11 parents/carers who have signed up for meetings this week to discuss their child's progress. Parents/carers of students on the SEND register, either SEN Support or students with an Education, Health and Care Plan in Years 8, 9 and 10 will be invited for a meeting as we move through the term.

High quality teaching is the first step in responding to students who have or may have a SEND. SEN Support is the first stage of extra support available for students at Lacon Childe and this offer is additional to the offer available to all students.

Whether your child is on the SEND register or not, if you would like to discuss any needs or support with us, Mr Stiles and his team are available every Friday morning for a drop-in session between 9.00am and 10.00am. In addition, you can contact us via email on [SEN@laconchilideschool.co.uk](mailto:SEN@laconchilideschool.co.uk)

## **Key Stage 4 Course Information Evening**

Last week we hosted our Key Stage 4 Course Information Evening for Year 10 parents. This was an important evening where information about our KS4 examination courses, controlled assessments, homework and exam dates were explained. We also shared details on the school's assessment and reporting process so that you, our parents and carers can be fully informed about your child's progress. Mr Treble who hosted the evening also shared information with regard to supporting your child in what can be a very demanding two years. If you were unable to attend the meeting, please see attached information below under letters for parents/carers. If you have any further queries, please contact [james.treble@laconchilideschool.co.uk](mailto:james.treble@laconchilideschool.co.uk).

## **Bike Show**

On behalf of the PTA, we would like to say a massive thank you to the amazing army of helpers from the staff, student, parent/carer and community bodies for the organisation of, and volunteering at, our fantastic bike show on Sunday. Although the weather was against us, the commitment to raising money for our wonderful school was outstanding. We look forward to sharing the total raised with you in due course.

## **'Tap out' and 'Brexit' Games**

The object of the 'Tap out' game is to choke someone until they are on the verge of passing out, at which point they 'tap out' to tell the other player to stop. This game first made the headlines in the UK in 2019. A 'Brexit tackle' is aggressive play in football games where a tackle is intentionally made, not to get the ball but instead to take out the player. It can cause severe injury.

As you would expect we will not tolerate these, or similar games, at Lacon Childe School. Any students who demonstrate or are found to be involved in games of this type will be treated with the severest consequences putting their place at Lacon Childe School at risk. We will be speaking to students about this matter, and we would be grateful if you did the same at home. Thank you for your support with this.

## **Jeans for Genes**

Thank you for your support both in the funding of the non-uniform day and for the generous donations of cake for the bake sale. We raised an impressive £421, which will make a significant difference to the lives of people living with a genetic condition. Thank you!

## **Trips and Visits**

Information on the following trips will be hitting your email inboxes over the next week...

Year 7 London  
Year 8 Arthog  
Year 9 Paris

## **Revision Guides**

Please find attached Year 10 Science Revision Guide letters. Please note that you need different revision guides for Triple Science than for the Combined Science. These are now available to pay for in the Shop section of Arbor.

## **Bridget Phillipson - Secretary of State for Education**

bphillipsonMP (@Bridget Phillipson) posted: If government, parents & schools work together, children thrive. I'll hold up my end of the deal: to roll out breakfast clubs, mental health support, curriculum reform, careers advice, better SEND provision. My ask is simple: help children into school. You can read more from Bridget here: <https://t.co/adRY0Ht2wR>

### **Reminders**

#### ▪ **Year 7 Welcome Evening**

We look forward to welcoming our new Year 7 parents to the school tomorrow evening at 5.30pm. Parents/carers will receive key information about our high expectations for Year 7, as well as having the opportunity to meet form tutors who will answer any questions or queries you may have.

#### ▪ **Open Evening**

We will be hosting our Open Evening this year on Monday 30<sup>th</sup> September 5:30pm-7.30pm.

#### ▪ **Game design workshop**

Please click on the link below for information on a free workshop in Ludlow on game design for 13-18year olds during half-term. <https://morethanacowork.com/collections/youth/products/afk-away-from-keyboard>

### **Letters for parents/carers**

[Open Evening](#)

[Triple Science Revision Books](#)

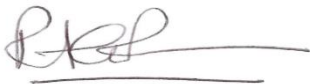
[Combined Science Revision Books](#)

[Year 10 GCSE Information Evening](#)

[Key Stage 4 Course Information Booklet](#)

Thank you again for all of your support. If you have any questions or concerns, please contact me on [rachel.croxtombroome@laconchilleschool.co.uk](mailto:rachel.croxtombroome@laconchilleschool.co.uk)

Yours sincerely



Rachel Croxton-Broome  
**Head Of School**



Ruth Allen  
**Consultant Executive Headteacher**

### **Dates to remember**

Thursday 26<sup>th</sup> September

Thursday 26<sup>th</sup> September

Monday 30<sup>th</sup> September

Monday 30<sup>th</sup> September

Thursday 3<sup>rd</sup> October

Thursday 3<sup>rd</sup> October

Friday 4<sup>th</sup> October

Monday 7<sup>th</sup> October

Tuesday 8<sup>th</sup> October

Thursday 10<sup>th</sup> October

Friday 11<sup>th</sup> October

Monday 14<sup>th</sup> October

Friday 25<sup>th</sup> October

Monday 26<sup>th</sup> October to Friday 1<sup>st</sup> November

Yr 7 Castles Trip (Stretton/Wrekin)

Yr 7 Welcome Evening

Yr 6 Open Day / Open Evening

Yr 11 Revision Timetable begins

National Poetry Day

Year 11 Imam Assembly

Yr 6 Open Morning

Careers Fair

Yr 11 Triple Science Trip - Bishops Wood

7M Church Visit

7W & 7S Church Visit

Yr 11 BTEC PE Coursework - all week

End of term

Half Term

## Fixtures

 LACON CHILDE SCHOOL <small>...more than just a school</small>	Date	Year	Sport	Venue & Start Date	Staff
	Wednesday 25th Sept	Yr8/10	Girls Netball	Oldbury Wells School Depart 3.15pm, return 5.30pm	ZT
	Wednesday 25th Sept	Yr9	Boys Football	Oldbury Wells School Depart 3.15pm, return 5.30pm	AU
	Wednesday 25th Sept	U13	Boys Football	Charlton School Depart 2.15pm, return 5.45pm	KW
	Wednesday 2nd October	Yr 11	Girls Netball	OSH Depart 3.15pm, return 6.00pm	ZT

**Love Lane, Cleobury Mortimer, Shropshire DY14 8PE**

**Tel: (01299) 270312**

**E-mail: [admin@laconchilideschool.co.uk](mailto:admin@laconchilideschool.co.uk)**

**[www.lacon-childe.org.uk](http://www.lacon-childe.org.uk)**

**The Shropshire Gateway Educational Trust**

A charity and company limited by guarantee registered in England and Wales, company number 9115941