

Lacon Childe School

Y7 Tutor Evening

September 24



Welcome

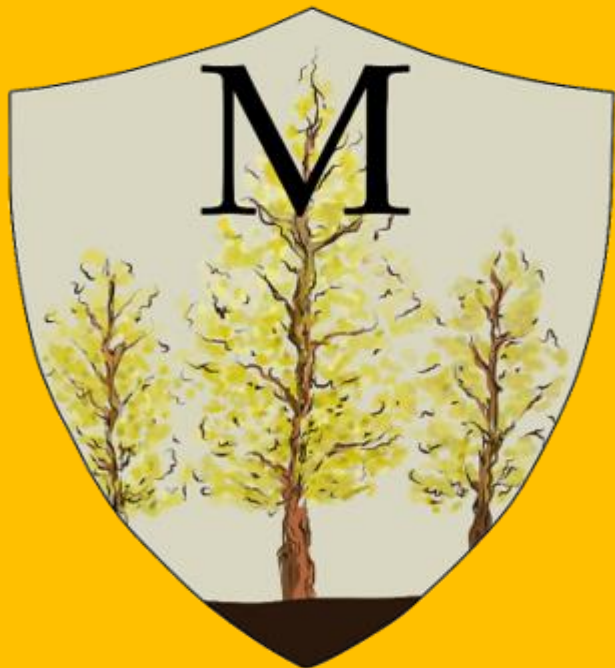
One 30th of Life at Lacon Completed





Mrs Davies Treble

Mr Urry



Mr Turner



Mr Treasure Evans



Miss Davis

Uniform

- Uniform is a key part of the ethos of the school, there is clear evidence that schools with high expectations of pupils with regard to uniform produce better examination results.
- Therefore, we expect all pupils to follow the uniform regulations.



PE

Kit

What happens if kit is forgotten

Changing times

Changing room behaviour

'Sick or fit bring your kit'

Clubs



Extra Curricular Clubs

	Lunchtime	After School
Monday	<ul style="list-style-type: none"> • Student Choir • Chess Club Room 13 (GN/AT) 	<ul style="list-style-type: none"> • Hockey all Years (RCB & LS)
Tuesday	<ul style="list-style-type: none"> • Drama Club • Code Club Room 12 (NT) • Netball skill in Sports Hall (ZT) • KS3 Maths Homework Support Room 11 	<ul style="list-style-type: none"> • Rugby all years boys and girls (ZT, AU, SA) • Homework Club in the Centre • Science Club Room 21 (CJ/LB/HG/NL)
Wednesday	<ul style="list-style-type: none"> • Basketball (SA & AU) • Keyboard Club • School Production Rehearsals (Acting/Dancing) • Creative Writing for all Years Room 7 (HYo) 	<ul style="list-style-type: none"> • Boys Football Week 2 – KS3 – (AU) • Netball (ZT & SA) • Drama Club/School Production Rehearsals
Thursday	<ul style="list-style-type: none"> • School Production Rehearsals (Acting/Dancing) • Music School Production Rehearsals • KS3 Art Club Room 14 (LW) • Years 7 & 8 Book Club Room 6 (PS) 	
Friday	<ul style="list-style-type: none"> • Badminton Week 1 – KS3 / • Spanish Club Room 27a (AK) 	<ul style="list-style-type: none"> • Table Tennis (KW) • Badminton Week 2 – KS3 (KG) • Girls Football (LS) • Relaxation and Wellbeing Room 7 (HYo)



London 2025

The Design Technology Department is again running our residential trip to London in the summer term.

We will be leaving Wednesday 25th June, staying in London for two nights and three days, returning Friday 27th June.

This very exciting trip will give our pupils the opportunity to experience design (Iconic design in the design museum, costume design, architecture, and product development), food and culture as well as experiencing the independence of being away from home.



LONDON

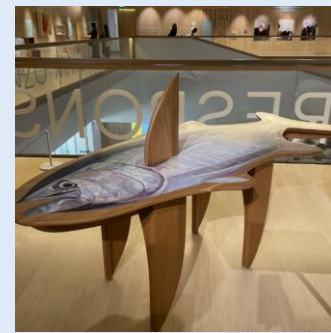


London 2025

We are planning to stay just outside London in the premier inn. The pupils will experience the magnificent architecture and visit the following places of interest:

- The Design Museum
- The London eye
- See 'The Lion King' the popular west end show
- A day at Thorpe Park
- A visit to Lea valley to take part in raft building and other water activities.

The cost of the trip will be between £452 and £480 dependant on the numbers of students who would like to go.



Desk Ready

- Make sure you have all your equipment
- Black pen
- Purple pen
- Pencil
- Calculator
- Reading book
- Apron



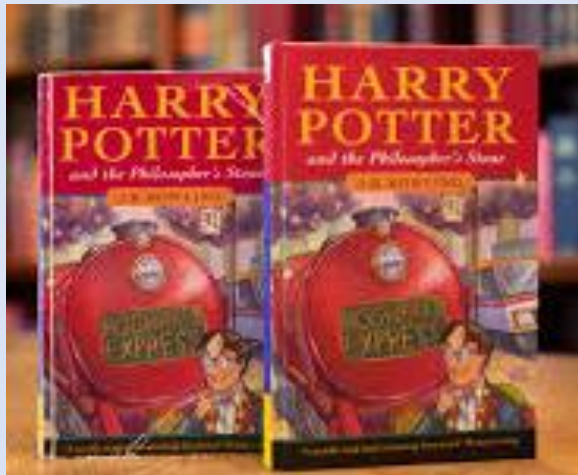
Homework





Reading Log

3 x 20 minutes per week
Checked every Wednesday
Part of home work sanction B2
Can be any form of reading



Homework Year 7 - Autumn Term 2 onwards

1. Reading logs will be used to monitor reading – these will be checked by tutors each week.
2. English and SPaG tasks will be set weekly using student booklets
3. Students will complete Sparx Maths tasks – these will be checked by Maths staff each week.
4. Science will set homework on a weekly basis. These tasks will be set and checked by their subject teacher.
5. All other subjects except PE will set homework on a two-weekly basis. These tasks will be set and checked by their subject teacher. PE will set homework at the end of each half term.

Monday	Reading (3 x tasks – 20mins) English and SPaG (1 task – 20mins)	Sparx Maths (3 x tasks 20mins)	Science (1 x task 15mins)	Nine subjects fortnightly (1 x task 15mins)
Tuesday				
Wednesday				
Thursday				
Friday				
How long total?	80 minutes	60 minutes	15 minutes	135 minutes



Year 7 maths homework

Sparx Maths has created perfectly tailored practice homework for students that is linked directly to Lacon Childre maths schemes of work.

Students will be set between 60-90 minutes of weekly homework based on topics that they have covered in class approximately 2 weeks prior. This supports retention to support student's long-term memory. In Year 11 students will be given past GCSE papers to support further exam practice.

For homework to be completed students need to finish all tasks set with a 100% pass rate. This is possible as when students get a question incorrect, they can watch how it should be completed, and they students get to retry the same question.

Teachers will ensure that homework set continues to reflect the topics covered and ability range of their individual class.

After completing approximately 100 questions, SPARX will have an improved picture of each individual's maths skills and be able to set appropriate levelled content to challenge and support each student.



Year 7 maths homework

Sparx Maths

Each student will be issued with a homework book. This does not need to be brought into school. Students can use this for their methods for each question, and occasionally SPARX will ask students to look back and enter the answer they got to a prior question to encourage use of methods.

As a parent you will receive weekly emails to explain what homework has been set, and a mid-week update to let you know how much homework your child has completed or still has to complete.

Teachers can track every answer, time spent, questions that required more than one attempt or were problematic for students and provide in class support on exact objectives to ensure any gaps in student knowledge are met.

Students can get support on Monday lunchtimes in room 11 from maths staff if they are experiencing any problems.

All students will be walked through how to use the system and complete the homework during w/c 30th September. Students will be emailed a 'how to' set of instructions once the system has been launched with their classes.





What can you do?

- Get plenty of sleep and go to bed at roughly the same time every night.
- No phones, games, TV late at night.
- Eat breakfast and be ready for the day.
- Keep on top of homework so that you know you are organised for the week.
- Pack your school bag and sort out uniforms the night before.





What can you do?

- Get yourself up and set an alarm. Don't always rely on parents/carers to get you up.
- Get involved in school life. The more you contribute the more you get back.
- Be motivated to be the best you can be.
- If you are well enough, come to school. Avoid having days off wherever possible.



ARBOR

New Schools Information Management System



ARBOR

Logging in to the student portal on Arbor

There is no app for students.

You log in via a web address.

<https://the-lacon-childe-school.uk.arbor.sc/>



Attendance



Why does attendance matter?

- You fall behind in work and lessons.
- You have lower motivation to be in school.
- Your enjoyment of learning is less.
- You are more likely to demonstrate inappropriate behaviour.
- You miss out on the social life of school and extra-curricular opportunities and experiences.



Child A: has 100% attendance over their 12 years at school.

Child B: has 90% attendance over their 12 years at school.

Child C: has 85% attendance over their 12 years at school.



On average every student who had over 95% attendance achieved 2 grades better than all other students.

Good attendance means...

Being in school at least 95% of the time or 180 to 190 days

365 days in a calendar year

175 days not in school!



A whole school year at 90% attendance = 4 weeks of lessons missed (Half a day a week)

90% attendance over 5 years in secondary school = half a school year missed

17 missed school days a year = 1 GCSE grade drop across all subjects

If a child improves their attendance by 1%, they could see a 5-6% improvement in their attainment.



Attendance

Year 7 – 98.41%

Clee	Mortimer	Stretton	Wrekin
99.23%	97.31%	99.31%	97.8%

School Matters!



Attend Today, Achieve Tomorrow



Time to celebrate



94 Children have 100% attendance

104 children have zero negative behaviour incidents

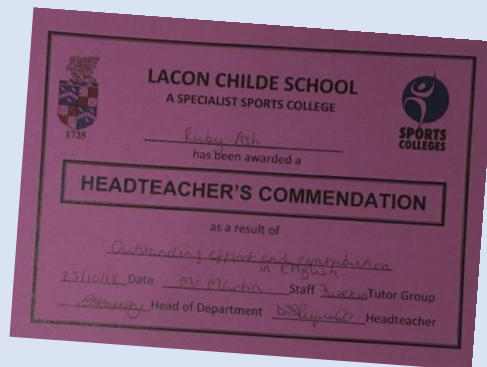
2200 positive behaviour incidents have been logged



Rewards and Sanctions

Staff at Lacon Childe School recognise the hard work, effort, application and attainment of the students and this is rewarded through the school rewards system

Check Arbor for behaviour incidents positive and negative are shared with you



Help us to help you

Please scan the QR code and complete
the survey

Your Opinion matters

